

AZ-4CP/AZ-6CP

AZ-6CP

[illegible]

AZ-3/AZ-5 Three and Five Zone Valve Controls



Electrical Specifications

MODEL NUMBER	ZONES	TRANSFORMER VOLTAGE	END SWITCH CONTACT RATING
AZ-3	3	120 V/60 Hz/ 40 VA	5 A-1/8 hp @ 120 VAC
AZ-5	5	120 V/60 Hz/ 75 VA	5 A-1/8 hp @ 120 VAC

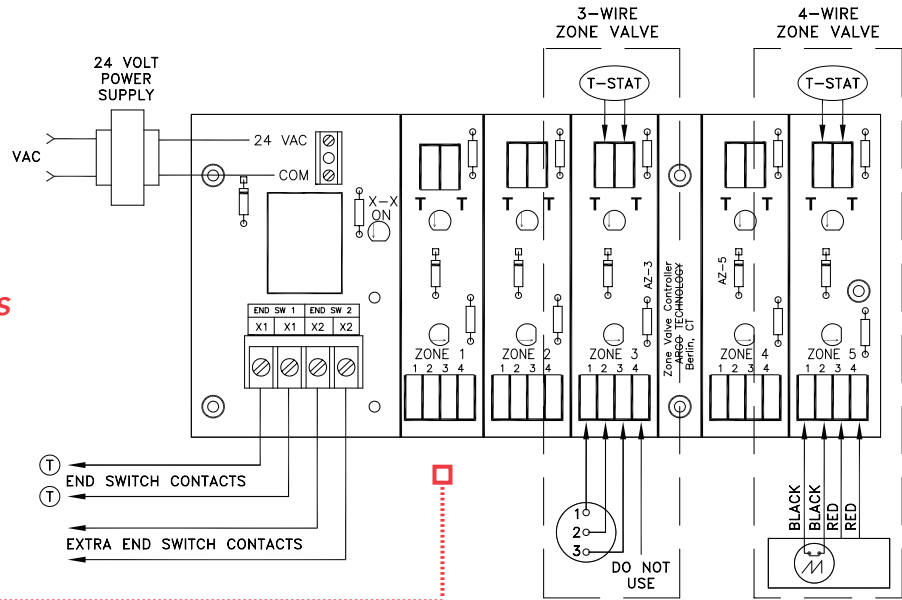
Application Flexibility

- Three (AZ-3) or five (AZ-5) zone valve controller
- Controls three or four wire 24v zone valves

Installation and Service Features

- LED diagnostic lights for easy troubleshooting
- Clearly marked terminal for easy and accurate installation
- 5 year limited warranty, 100% factory tested

Wiring Diagram Notes:



Install with jumper between terminals 3 and 4 when using zone valve without an end switch.

DPM2 Outdoor Reset Control

The DPM2 monitors outside temperature and adjusts boiler water temperature to match the heating demand, maximizing efficiency and reducing boiler usage.



- Simple plug 'n play data port ribbon connection when used in conjunction with any Argo Relay or Zone Valve Control
- Or can work with most competitors' relays
- Reduces heating costs an average of 10% to 15% a year (depending on climate).

STANDARD EQUIPMENT:



Outdoor Sensor with Shield

Strap-on Supply Water Sensor

Data Port Ribbon Cable Connector



ECR International: 2201 Dwyer Avenue, Utica, NY 13501

Tel. 315 797 1310 or 800 325 5479 Fax. 315 724 9319 www.ecrinternational.com

In Canada, Morden National Sales & Marketing: Tel. 519 627 0791 Fax. 866 835 6667 www.mordennational.com

All specifications subject to change without notice.

©2017 ECR International, Inc.

PN 240005997 REV. 6/17