



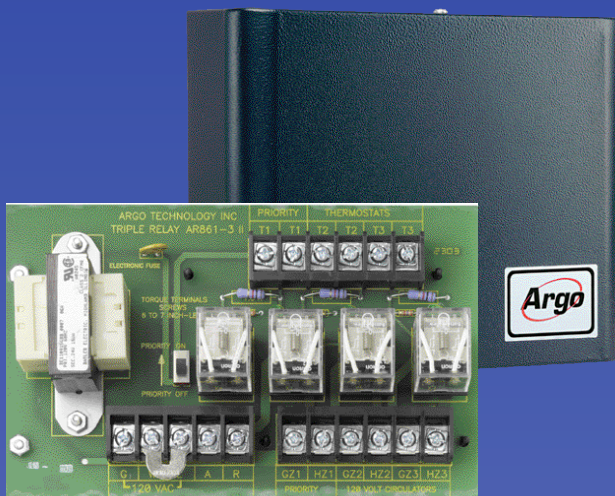
**SWITCHING RELAYS
& ACCESSORIES**



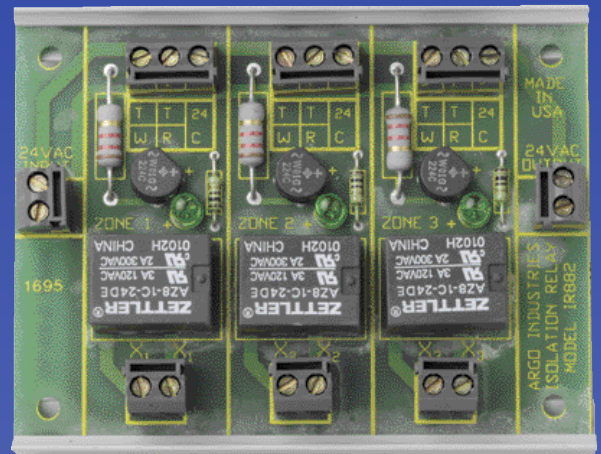
ARM4P



DPM2



AR861-3II



**IR882
3-Zone**

Switching Relays & Accessories
Easy, Economical Zoning with Circulators

ARM ■ AR ■ DPM2 ■ IR882

**Advanced
Technology
At Work
For You!**

AR822II Single Zone Relay



- DPDT
- ICE CUBE TECHNOLOGY
 - Plug-in Replacement Relays
- AUTO-RESET ELECTRONIC FUSE PROTECTION
 - Eliminates Nuisance Service Calls
- 15VA TRANSFORMER / FULL 7.2 AMP / 1/3 HP RELAY LOAD RATING
 - Robust Components Provide Years of Trouble-free Service
- 5-YEAR LIMITED WARRANTY
 - Strongest Protection Available

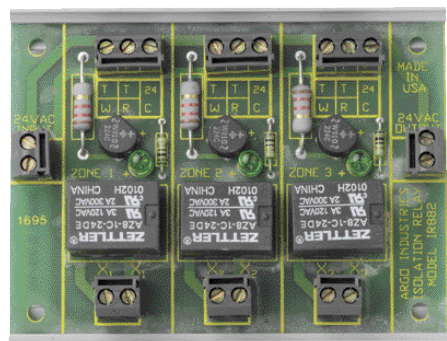
AR861-2II/3II Two and Three Zone Relays with Priority



(2-Zone Shown)

- 2-ZONE AR861-2II OR 3-ZONE AR861-3II
- ICE CUBE TECHNOLOGY
 - Plug-in Replacement Relays
- SWITCHABLE PRIORITY
 - Perfect for Indirect Water Heaters or Priority Zones
- AUTO-RESET ELECTRONIC FUSE PROTECTION
 - Eliminates Nuisance Service Calls
- 15VA TRANSFORMER / FULL 7.2 AMP / 1/3 HP RELAY LOAD RATING
 - Robust Components Provide Years of Trouble-free Service
- 5-YEAR LIMITED WARRANTY
 - Strongest Protection Available

*IR882 Isolation Relay For Up to Three Zones



- SPST
- FOR USE WITH POWER ROBBING PROGRAMMABLE THERMOSTATS OR 3-WIRE (R, C, W)
- INTERFACES WITH SOLID STATE THERMOSTATS
- MODULES CAN BE "DAISY-CHAINED" FOR ADDITIONAL THERMOSTATS

* Requires additional transformer.

ARM Control Expandable Zone Relays 2, 3, 4 and 6 Zone Controls



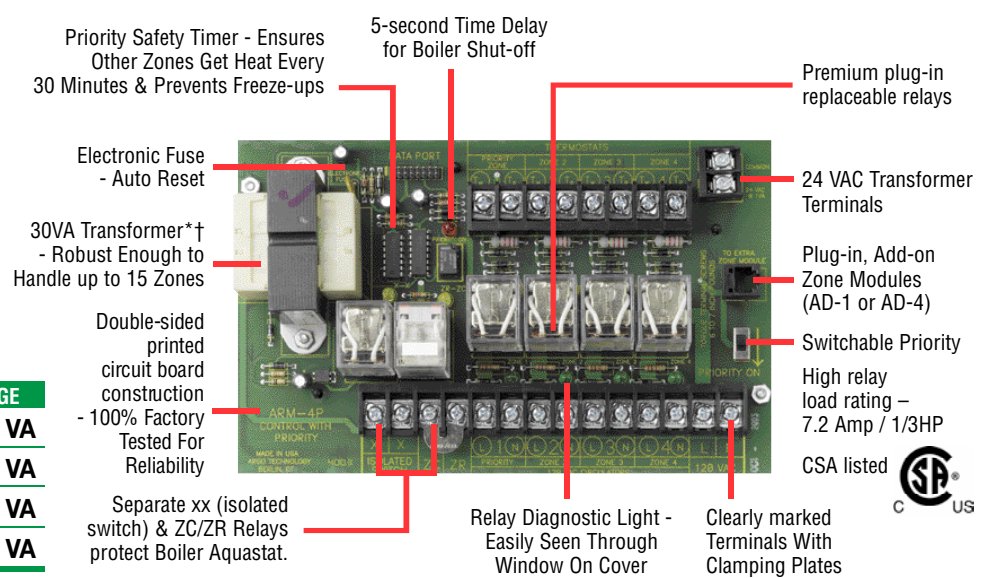
SWITCHING RELAYS & ACCESSORIES

ARM4P



MODEL	ZONES	TRANSFORMER VOLTAGE
ARM2P	2	120 VAC, 60 Hz, 20 VA
ARM3P	3	120 VAC, 60 Hz, 30 VA
ARM4P	4	120 VAC, 60 Hz, 30 VA
ARM6P	6	120 VAC, 60 Hz, 30 VA

Features:



* ARM-2P uses 20 VA Transformer. † Requires dry contact type thermostat or use of IR822 Isolation Relay

AD-4 Add-On Zoning Modules For ARM Relay Control



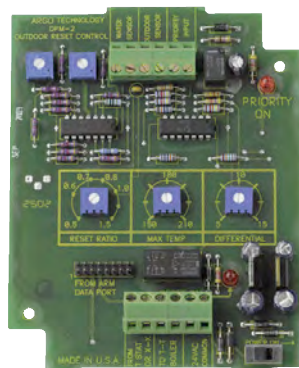
SPECIFICATIONS:

MODEL	ZONES	TRANSFORMER VOLTAGE	SWITCHING ACTION	THERMOSTAT CURRENT	SINGLE PHASE MOTOR RATING 120V AC
AD-1	1	N/A	0.085	SPST	1/3HP
AD-4	4	N/A	0.085	SPST	1/3HP



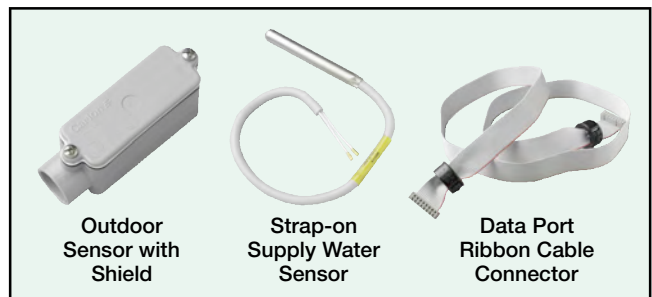
DPM2 Outdoor Reset Control

The DPM2 monitors outside temperature and adjusts boiler water temperature to match the outdoor demand – maximizing efficiency and reducing fuel usage.



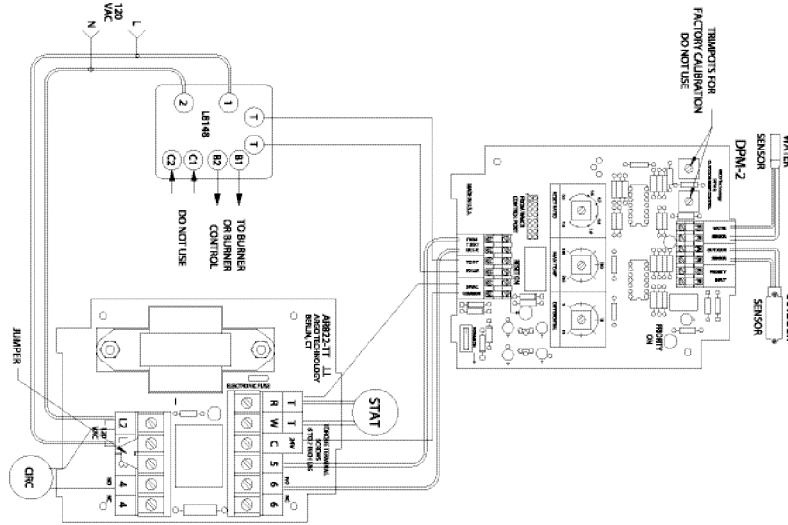
- Can be used with any Argo Relay or Zone Value Control
- Or can work with most competitors' relays
- Reduces heating costs an average of 10% to 15% a year (depending on climate).

Standard Equipment:

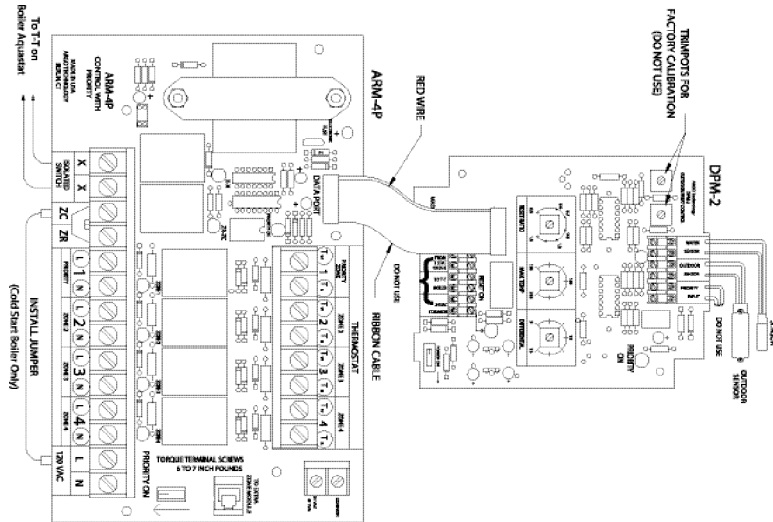


DPM2 Wiring Diagrams

Typical Wiring
Application Using
DPM-2 Outside Reset
With ARGO AR822-II
Relay Control



Typical Wiring
Application Using
DPM-2 Outside Reset
With ARGO ARM-4P
Circulator Control



Typical Wiring
Application Using
DPM-2 Outside Reset
With TACO SR 503
Relay Control

