



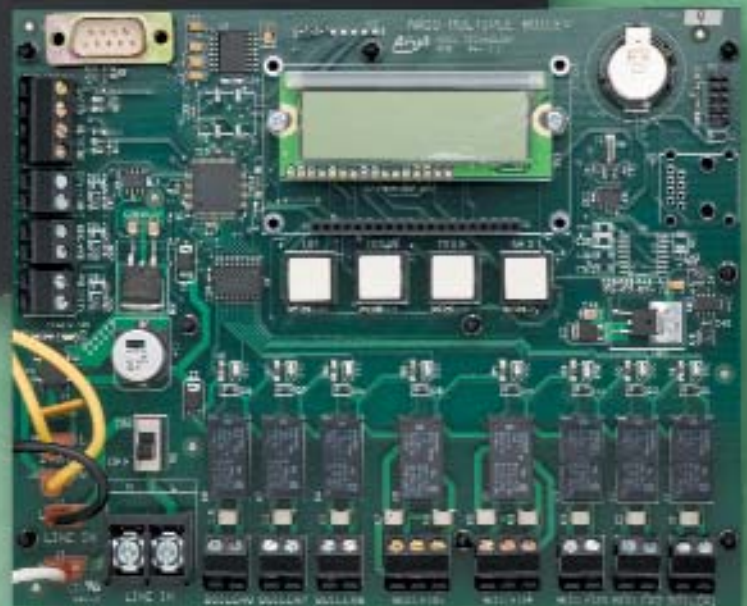
Argo[®]

MODULAR BOILER CONTROLS

COMMERCIAL/RESIDENTIAL



AMB4A/AMB8A



MODULAR BOILER CONTROLS

Consistent, Cost-Effective Comfort

- Domestic Hot Water Priority
- Adjustable Outdoor Temperature Setback with Sensor – adjusts boiler temperature to save fuel
- Fixed 20°F Night Setback Option and Warm Weather Boiler Shutdown for additional fuel economy
- Adjustable Minimum Boiler Water Temperature
- Equal run time rotation for added longevity through uniform system component usage
- Commercial Grade, Locking Steel Cover
- Digital Display

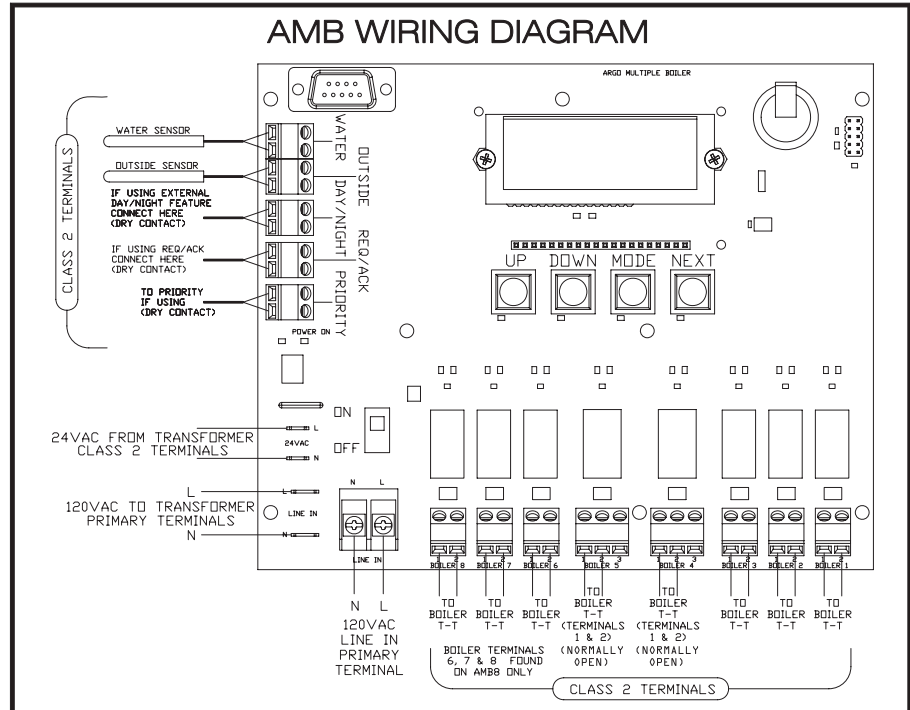
Ideal for multiple boiler system applications – firing large capacity boilers with stage capability.

MODULAR BOILER CONTROLS

COMMERCIAL/RESIDENTIAL



Argo Modular Boiler Controls provide cost-effective comfort in multiple boiler residential and institutional applications. These controls adjust the boiler water supply temperature based on outdoor temperature fluctuations, lower off-peak period demand and prioritize domestic hot water needs. They also contribute to the longevity of your heating system investment by regulating individual boiler run time and lead boiler rotation for more uniform component usage.



AMB4A/AMB8A

Technical Data & Specifications

- Compatible with Fixed Capacity and Modulating Boilers – Interfaces with any boiler that accepts a dry contact
- Number of Stages: AMB4A (4), AMB8A (8)
- Incoming Power: 120 VAC, 60Hz
- Relay Capacity:
AMB4A
3 x SPST, 24 VAC 5 Amps
2 x SPDT 24 VAC, 5 Amps
AMB8A
6 x SPST, 24 VAC 5 Amps
2 x SPDT 24 VAC, 5 Amps
- Control Processing: PID Algorithm
- Temperature Control Accuracy: 2°F
- Sensor Accuracy:
Up to 500' with 18 AWG Cable
- Dimensions: 11 3/4" x 8 1/4" x 2 1/2"
- Weight: 13 lbs.
- Locking Cover

Programmable Features Include:

- Heating Curve Reset Ratio (0.2 to 5.2)
- Boiler Differential (1°F to 20°F)
- Minimum Boiler Water Supply Temperature (50°F to 149°F Threshold)
- Equal Run Time via 24 Hr. Rotation of Lead Boiler (On/Off)
- Lo/Hi Fire Rotation – 2 boiler system (AMB4A Only)
- Domestic Hot Water Priority (On/Off) – takes the boiler out of a lower water reset temperature during a call from domestic
- Day/Night 20°F Boiler Setpoint Temperature Setback (On/Off)

Installation, Operation and Maintenance

- Industry Standard Connections
- Easy Operation:
 - Adjust Mode
 - Review Mode
 - Run Mode
 - Auto Test Mode
- Programmable memory not affected by power loss
- Self Diagnostic Feature on Start-Up



2201 Dwyer Ave., Utica, New York 13501
Phone: 315-797-1310 • Fax: 866-432-7329
www.argoindustries.com
E-mail: info@ecrinternational.com

USA Homeowner Assistance: 866-847-6656
Contractor Technical Service: 800-325-5479

An ECR International Brand

In Canada Contact: ECR International Ltd. - Olsen Division, P.O. Box 900, 6800 Base Line, Wallaceburg, Ontario, Canada N8A 5E5

Ph: (519) 627-0791 • Fax: (519) 627-4719 • Web: www.ecrltd.com • E-mail: info@ecrltd.com

Pt#240004986 • 9/07